

2018 IMPACT REPORT



OUR MISSION

The Emergency Medicine Foundation promotes education and research that develops career emergency medicine investigators, improves patient care and provides the basis for effective health policy.

OUR *new* LEADERS

Our shared vision for the Emergency Medicine Foundation (EMF) is to grow and advance emergency medicine research now and into the future. We want to expand EMF funding support for developing and experienced researchers in emergency medicine so that they can discover game-changing treatments, protocols, practices, and health policies that contribute to the highest quality of care for patients in the emergency department. EMF's vision is to continue planting seeds that allow a young scientist or clinical investigator to learn what they are capable of and to fund research studies that are ahead of their time in leading emergency medicine into the future.

To achieve this vision, EMF's goal is to develop greater support among individuals, corporations, and partnering organizations who can contribute strategically and financially to the shared vision of advancing emergency medicine research. And, we need more individuals to join the Wiegenstein Legacy Society that allows donors to include EMF in their estate plans so that more research grants will be awarded in the future. For EMF to achieve its vision, we need your support and hope you will join us in advancing emergency medicine research and patient care for all Americans.



Stephen H. Anderson, MD, FACEP
EMF Chair



Peggy Brock
EMF Executive Director

To date, EMF has awarded more than **\$16 million in research grants to advance emergency medicine science and health policy.**

EMF funds have launched the careers of many of the most respected and published researchers in emergency medicine.



**\$1.2
MILLION**

Awarded to 35 grantees in 2017-2018 fiscal year

FUNDED PRACTICE CHANGING RESEARCH

With his first EMF grant of \$5,000, Dr. Arjun Venkatesh explored observation care in emergency medicine- and from there he went on to be the first EMF/EMAF scholar. After that, though, his star has continued to rise, and he has been awarded an NIH KL2 grant, as well as several other federal and foundation grants. He serves on technical expert panels for the National Quality Forum and AHRQ. He currently co-leads ACEP's Emergency Quality Network [or E-QUAL].

Dr. Jeff Kline's first \$45,000 grant supported his early interest in cardiovascular research. He received multiple EMF grants. His research in risk stratification and proper test utilization has changed not only the practice of emergency medicine, but medicine in general. He has received 6 NIH grants, over \$17 million in federal funding, and has also written 16 patents for novel devices and co-founded a privately held medical device company.

"It takes a lot of years and experience and support to get to do this. It's a gripping and true story, and one that EMF helped make possible with their research funding", said Dr. Kline.

The **WIEGENSTEIN LEGACY SOCIETY**

The Wiegenstein Legacy Society (WLS) is the recognition society for those who have included EMF in their estate plans. 101 WLS members have bequeathed an estimated \$2.6 million.

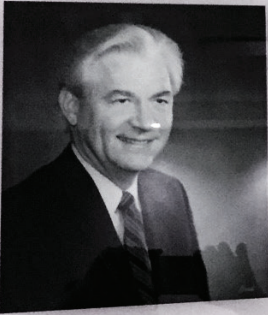


Between every pairing of a date of birth and a date of death is literally and figuratively a dash. Emergency physicians make a profoundly positive difference with their dashes. WLS represents the ability for emergency physicians to pre-plan continuing to make a positive difference after their dash is carved. We are able to celebrate the achievements (and the opportunities created by the challenges) of emergency medicine today because our present is the culmination of investments past. EMF and its WLS helps all of us optimize investment in emergency medicine research — learning from our past, encouraging our present, and expanding our future. Supporting EMF today and promising funds ahead through WLS represent money well and wisely spent. The efficient, life-saving care you create in the future could be your own! – **Jeffrey Goodloe, MD, FACEP**

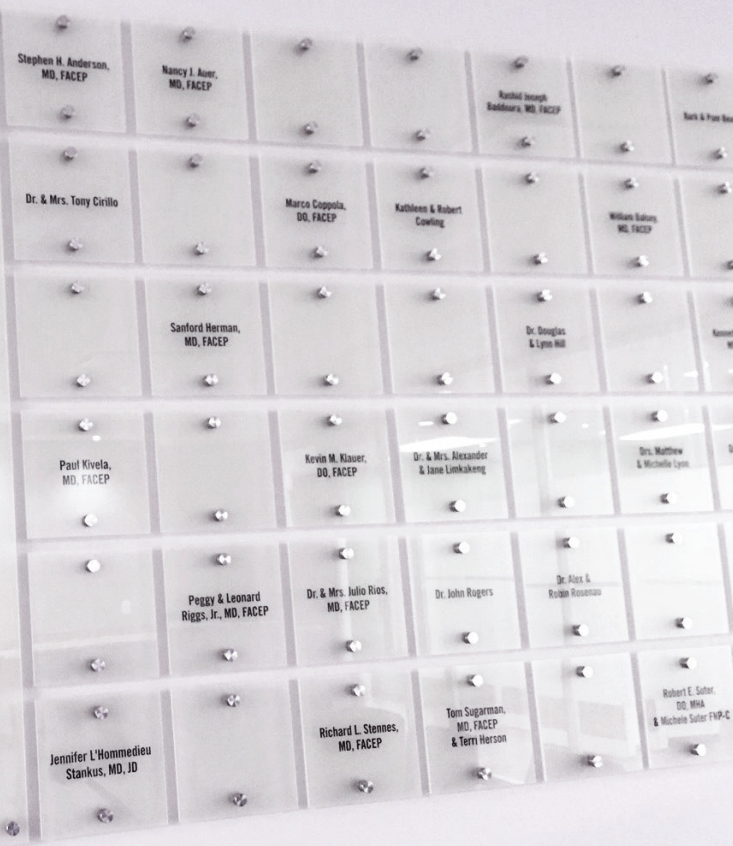


Emergency Medicine has been my life for 48 years; it's has been very good to me. My gifts to EMF have been a thank you for all EM has given me. I joined the Wiegenstein Legacy Society (WLS) to honor my dear friend John Wiegenstein, it was the logical extension of my annual giving. I think grandchildren and research are both investments in the future. EMF ensures better Emergency Medical care for my family, today and after I am gone. Including EMF in my estate planning was as easy as changing the beneficiary on a form. If I were just starting out today, I would also buy a life insurance policy, an annuity, or a mutual fund in EMF's name. Since I donate to EMF in lieu of flowers when friends die, I have let my family know to include EMF in my obituary. – **Pamela Bensen, MD, MS, FACEP**

Wiegenstein Legacy Society



In honor of John G. Wiegenstein, MD, FACEP, the founding president of the American College of Emergency Physicians, the Wiegenstein Legacy Society recognizes those who include the Emergency Medicine Foundation in their estate plans. Through its members' extraordinary commitment, the Wiegenstein Legacy Society honors the past by securing the future of emergency medicine through research and education.



Stephen H Anderson, MD, FACEP
 Nancy J Auer, MD, FACEP
 Paul S Auerbach, MD, MS, FACEP
 James Jerome Augustine, MD, FACEP
 Rashid J Baddoura, MD, FACEP
 Pamela P Bensen, MD, MS, FACEP
 Andrew I Bern, MD, FACEP
 Michael D Bishop, MD, FACEP[E]
 Brooks F Bock, MD, FACEP
 Michael J Bresler, MD, FACEP
 Peggy Brock
 Kirk WG Brown, MD, FACEP
 Kate Burke, MD, FACEP
 Michael L Carius, MD, FACEP
 Randall B Case, MD, MBA, FACEP
 Jordan Celeste, MD, FACEP
 Cal Chaney, JD
 L Anthony Cirillo, MD, FACEP
 Marco Coppola, DO, FACEP
 Kathleen Cowling, DO, FACEP
 William Colwell Dalsey, MD, FACEP
 Mark L DeBard, MD, FACEP
 James and Dorothy Downing
 Tanya L Downing
 Peter M Fahrney, MD, FACEP[E]
 Joseph S Fastow, MD, FACEP
 Wesley Fields, MD, FACEP
 Angela Siler Fisher, MD, FACEP
 Kelly Foley, MD, FACEP
 Marsha D Ford, MD, FACEP
 Daniel Freess, MD, FACEP & Elizabeth
 Schiller, MD, FACEP
 Vidor E Friedman, MD, FACEP
 John M Gallagher, MD, FACEP

Michael Joseph Gerardi, MD, FACEP
 Jeffrey Michael Goodloe, MD, FACEP
 Andrea L Green, MD, FACEP
 Robert Heard, MBA, CAE
 Gregory L Henry, MD, FACEP
 Sanford H Herman, MD, FACEP
 Douglas M Hill, DO, FACEP
 Kenneth L Holbert, MD, FACEP
 Hans Roberts House, MD, FACEP
 Bruce D Janiak, MD, FACEP
 Jeffrey Johnson, MD
 Nicholas John Jouriles, MD, FACEP
 Christopher S Kang, MD, FACEP
 Julius (Jay) A Kaplan, MD, FACEP
 Brian F Keaton, MD, FACEP
 Gabor David Kelen, MD, FACEP
 Jayne M Kendall, MD, FACEP
 Paul Daniel Kivela, MD, MBA, FACEP
 Kevin Michael Klauer, DO, FACEP
 Phillip David Levy, MD MPH, FACEP
 Alexander Tan Limkakeng, MD, FACEP
 Wendy Ann Lucid, MD, FACEP
 Matthew Lyon, MD, FACEP
 Angela F Matkke, MD, FACEP
 John B McCabe, MD, FACEP
 David A McKenzie, CAE
 George W Molzen, MD, FACEP
 Sonja R Montgomery, CAE
 John Bruce Moskow, MD, FACEP
 Rick Murray, EMT-P
 John O Newcomb, MD, FACEP
 Robert E O'Connor, MD, MPH, FACEP
 Jane O'Shaughnessy, MD, FACEP
 David C Packo, MD, FACEP

Edward A Panacek, MD, MPH, FACEP
 Charles F Pattavina, MD, FACEP
 Debra G Perina, MD, FACEP
 John H Proctor, MD, MBA, FACEP
 Leonard M Riggs, Jr, MD, FACEP
 Julio E Rios, MD, MMM, CPE, FACEP
 John J Rogers, MD, FACEP
 Alexander Max Rosenau, DO, FACEP
 Mark S Rosenberg, DO, MBA, FACEP
 John A Russ, III, MD, FACEP
 Robert W Schafermeyer, MD, FACEP
 Sandra M Schneider, MD, FACEP
 David Charles Seaberg, MD, CPE, FACEP
 Cynthia A Singh, MS
 David P Sklar, MD, FACEP
 Michael D Smith, MD, MBA, CPE, FACEP
 Jennifer L'Hommedieu Stankus, MD, JD, FACEP
 Gary C Starr, MD, FACEP
 Richard L Stennes, MD, MBA, FACEP
 Ronald D Stewart, MD, FACEP
 Thomas Jerome Sugarman, MD, FACEP
 Robert Eduard Suter, DO, MHA, FACEP
 Sara F Sutherland, MD, MBA, FACEP
 K J Temple, MD, FACEP
 David F Tulsia, MD, FACEP
 Matthew J Watson, MD, FACEP
 Marvin A Wayne, MD, FACEP
 Anna L Webster, MD, FACEP
 Arlo F Weltge, MD, MPH, FACEP
 David E Wilcox, MD, FACEP
 Dean Wilkerson, JD, MBA, CAE
 Robert M Williams, MD, DPH, FACEP
 Mildred J Willy, MD, FACEP
 Anonymous

WHY YOUR SUPPORT MATTERS

“ My EMF-funded work was not disease-specific and would have struggled to find a home among the NIH institutes. I appreciate how EMF recognizes the value of emergency medicine research that doesn't fit into the neatly organized boxes of the NIH and supports so many young and promising investigators. Our project has been a success and our academic products are still forthcoming. We believe this work will lead to a valuable line of telemedicine-focused emergency research and has potential to inform future telemedicine-related policy.

Dr. Korilyn Zachrison was awarded an EMF Health Policy Research Grant for \$49,955. She is conducting “A national study of telemedicine use in US Emergency Departments: understanding barriers to implementation” at Massachusetts General Hospital and Harvard Medical School.



“ My project would not have been able to go forward without EMF funding and the grant helped get me started toward pursuing my academic interests. Giving young researchers a hand in completing their projects helps everyone in the long run: the grantees, fellow ED physicians, and most of all our patients.

Dr. Neeraj Chhabra was awarded an EMF Emergency Medicine Basic Research Skills Grant for \$5,000. He is conducting work on “Adjunctive 5% lidocaine patches in the treatment of acute non-radicular low back pain in patients discharged from the emergency department” at John H. Stroger Jr. Hospital of Cook County.



THE *next* 50 YEARS



EMF funds game-changing research in vital areas such as traumatic brain injury, sepsis, the use of bedside ultrasound and protocols for TIA. EMF promotes research that supports effective health policy including ED crowding, and closures, as well as payment reform, alternate payment models and the ED's role in care coordination for Medicare beneficiaries.

We need your help to plan the next 50 years!

Give \$50! Donate Today!
emfoundation.org/next50years



Michelle Lin, MD, MPH, MS

Emergency medicine does not have an NIH institute, so as a health services researcher EMF's support enabled me to pursue my research interest in measuring the value of emergency care at an important time in my career. The Health Policy Research Scholar award provided the time, resources, training and preliminary data I needed to apply for federal funding. I'm truly grateful for EMF to support research that advances emergency care and I look forward to the opportunity to give back!

THANK YOU!

Our success depends on you. Your gifts help enhance our influence as we promote the specialty's critical role in national health policy and pursue research initiatives that enrich our practice. Your dollars help us leverage support from governmental agencies, research institutions and individual donors in our work to improve patient care and strengthen the practice of emergency medicine.

On behalf of the EMF Board of Trustees, we THANK YOU for your investment in research.

**For more information, visit us at: emfoundation.org
Questions? Call 469.499.0296**